

# MEDI DERMA-S

## Total Barrier Cream and Total Barrier Film



### Patient Information Leaflet

**TOTAL  
BARRIER  
PROTECTION™**  
[WWW.TBPSKINCARE.INFO](http://WWW.TBPSKINCARE.INFO)

**PREVENT.  
PROTECT.  
REPAIR.  
RESTORE.**

# MEDI DERMA-S

## Your Questions Answered

### What is **MEDI DERMA-S**?

- **MEDI DERMA-S** is part of our Total Barrier Protection product range which helps protect skin against moisture associated skin damage.
- **MEDI DERMA-S** Total Barrier Cream and Film form a protective transparent barrier to protect your skin from the harmful effects of moisture, irritants and skin damage from adhesive wound dressings or pouches.
- **MEDI DERMA-S** Total Barrier Cream and Film do not sting when applied to already sore, intact or damaged skin.
- **MEDI DERMA-S** Total Barrier Cream and Film are quick drying, and the Total Barrier Cream is non-greasy, leaving skin dry enough to put clothes on almost immediately after application.

### When is **MEDI DERMA-S** used?

- To protect the skin from incontinence, which can cause the skin to become sore and breakdown.
- To protect skin around stomas to prevent skin getting sore from leakage or from having to take stoma pouches on and off frequently.
- To protect from long term use of adhesive/sticky dressings.
- To prevent and treat the wet, macerated (soggy white tissue similar to when you have been in the bath for a long time) skin around ulcers/wounds.

### Will **MEDI DERMA-S** work?

- Your medical/nursing team will be working to correct and/or manage the underlying condition that has led to your skin becoming sore or at risk of breakdown.
- **MEDI DERMA-S** products are frequently used with excellent results as long as the most appropriate format is used and regularly applied as recommended.

### Should I use **MEDI DERMA-S** Cream or Film?

- Your healthcare professional will advise on the most suitable option for your needs.
- Both formats are suitable for the protection and treatment of intact, injured and at-risk skin from moisture associated skin damage.
- The film rather than the cream should be used on sore skin caused by excess perspiration, such as in skin folds (e.g. groin, underneath breasts) once your doctor or nurse has determined there is no skin infection.
- As a general guide, the film would be the better choice on wet and sore skin. The cream is not suitable for use on wet, macerated skin around wounds.

## How often do I apply **MEDI DERMA-S?**

- Your healthcare professional will advise on how frequently it should be applied.
- As a general rule, the film remains on the skin for up to 72 hours but may need to be reapplied more often if frequent washing of your skin is needed.
- When being used to protect skin from incontinence, it is generally recommended that the cream is applied twice daily, for example every morning and evening. Additional applications may be required in the event of very frequent episodes of incontinence and skin cleansing during a day.
- When used around wounds (film only) or stomas (cream or film), the product should be reapplied at every dressing or pouch change.

## How do I remove **MEDI DERMA-S** products?

- The Total Barrier Film will usually wear off naturally during washing and complete removal is not required before reapplication. If removal is required, standard medical adhesive removers can be used as directed by your nurse or healthcare professional.
- Removal of **MEDI DERMA-S** Total Barrier Cream is not necessary before reapplying.

## When should I stop using **MEDI DERMA-S?**

- Your healthcare professional will be able to advise when the cream or film is no longer required. Your skin should be examined regularly for signs of improvement or deterioration. Generally, **MEDI DERMA-S** products should be discontinued when there is improvement in your symptoms or condition.
- **MEDI DERMA-S** Total Barrier Cream and Film may be used for long periods when they are being applied to prevent your skin breaking down.

## Are there any side-effects when using **MEDI DERMA-S?**

- When used as directed by the healthcare professional, there should be no side-effects.
- You should consult your healthcare professional if there are any signs of skin infection or irritation and stop using **MEDI DERMA-S** until the problem has been resolved.

# Instructions for Use Total Barrier Cream Non-Sting



1



## Skin Preparation:

- Ensure that the skin around the treatment area is clean, free from any grease and dry.

2



## Application:

- **"Pea to Palm"**: Use a pea sized amount of cream to cover an area approximately the size of your palm.
- Using a gloved finger tip, apply evenly to the treatment area using a circular motion.

3



## Quantity to Use:

- **Do NOT over-apply.** The skin should be clearly visible through the cream layer.
- If the skin appears oily, too much cream has been applied. Remove excess with a soft paper tissue/towel.

4



## Apply Dressing/Device:

- Once you are happy that the correct amount of cream has been applied and is fully dry, apply the ostomy pouch, adhesive device or dressing as normal (if applicable). Reapply barrier cream as instructed.



## PRECAUTIONS

### Total Barrier Cream:

For **EXTERNAL** use only. Do **NOT** use on infected areas of skin. Do **NOT** use if there are signs of skin reaction following product application, or if there are known allergies/sensitivities to any of the ingredients. Consult your clinician accordingly. Only use as directed. Do **NOT** use past expiry date or if product is damaged. Once opened, product can be used through to expiry date. For single patient use only. Keep out of reach of children.



**Medicareplus**  
INTERNATIONAL  
Est. 2008

# Instructions for Use

## Total Barrier Film

### Non-Sting



1

#### Skin Preparation:

- Ensure that the skin around the treatment area is clean, free from any grease and dry.



2

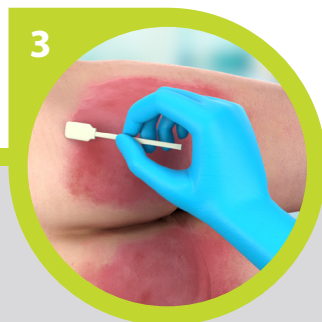
#### Application:

- When using the aerosol or pump spray format, ensure that the can is **held away** from the skin surface:

Aerosol **10-15cms**

Pump Spray **5cms**.

- Use a **slight sweeping movement** as you spray to ensure an even coating.



3

- When using the applicator format, apply a uniform coating over the whole area that is to be protected. If using for management of peri-wound or peri-stomal maceration/excoriation, apply to surrounding skin only.
- Use a **slight movement** as you apply to ensure an even coating.



4

#### Apply Dressing/Device:

- Once dry\*, apply the ostomy pouch, adhesive device or dressing as normal (if applicable). Reapply barrier film as instructed.

#### \* Drying Time:

When using the aerosol or pump spray, allow up to **30 seconds** to fully dry.

When using the applicator or wipe, allow **5-10 seconds**. Hold open any skin folds to ensure complete drying.



#### PRECAUTIONS

#### Total Barrier Film:

For **EXTERNAL** use only. Do **NOT** use on infected areas of skin. Do **NOT** use if there are signs of skin reaction following product application, or if there are known allergies/sensitivities to any of the ingredients. Consult your clinician accordingly. Only use as directed. Do **NOT** use past expiry date or if product is damaged. For single patient use only. Keep out of reach of children.



**Medicareplus**  
INTERNATIONAL  
Est. 2008

# MEDI DERMA-S

What formats are available within the **MEDI DERMA-S** range?

Format	Selling Unit	Product Code	PIP Code	NHS-SC Code
--------	--------------	--------------	----------	-------------

## Total Barrier Cream - Non-Sting

For Skin Protection & Moisturisation

Sachet - 2g	20 Pack	60338	341-3317	ELY536
Tube - 28g	1	60628	388-3121	ELY563
Tube - 90g	1	60345	341-3325	ELY538

## Total Barrier Film - Non-Sting

For Skin Protection

Aerosol - 50ml	1	60819	389-7139	ELY561
Pump Spray - 30ml	1	60796	389-7121	ELY562
Wipe	30 Pack	60307	341-3184	ELY788
<b>Sterile</b> Applicator - 1ml	5 Pack	61076	362-8716	ELY532
<b>Sterile</b> Applicator - 3ml	5 Pack	61090	362-8724	ELY533



**Medicareplus**  
INTERNATIONAL *Est. 2008*

**Medicareplus International Limited**

Chemilines House | Alperton Lane | London | HA0 1DX | United Kingdom

Telephone: +44 (0)20 8810 8811 | Email: [info@medicareplus.co.uk](mailto:info@medicareplus.co.uk)

[www.medicareplus.co.uk](http://www.medicareplus.co.uk)